

# Si-93

## Membrane Pump



The Si-93 is a revolutionary system (patent pending) fitted with the most advanced Sauermann® technologies. Specially designed to handle the condensates from supermarket refrigerated display cabinets, this unique system prevents the formation of biofilm. The compact, ergonomic design facilitates installation under the new generations of low-slung display cabinets.

### ADVANTAGES



- « Sauermann inside » : anti-biofilm system

- **Revolutionary surface treatment:** pump and detection do not get blocked.
- **Environmentally-friendly solution:** no chemicals.
- **Increased life-expectancy, improved reliability.**

- Easy to install – easy to maintain

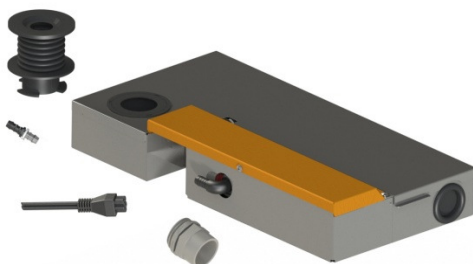
- **“Ultra-flat” profile:** tank is only 69 mm high. Ergonomic design.
- **Trap function included:** control of odours and refrigeration loss.
- **3 inlet points:** top, right or left sides.
- **Universal inlet adaptor:** 32 – 40 – 50 mm, fast connection / disconnection.
- **Adjustable outlet direction:** can be turned to left or right.
- **Debris collecting basket:** for easier cleaning.
- **Unpluggable electrical connector:** for easier maintenance.
- **Easy opening cover:** reduces maintenance time.

- Reduced operating costs

- **Reduced maintenance:** preventing the formation of biofilm reduces the risks of water leaks and pump life is increased.
- **Stainless-steel construction:** excellent impact and corrosion resistance.
- **Spare parts management:** removable pump unit = reduced replacement costs.
- **Energy-saving:** operating time reduced thanks to increased flow rate.



### CONTENT



- Membrane pump.
- Removable power cable 1.5 m: 2 power conductors, 2 safety contact conductors
- Rubber bellows int. Ø 32, 40, and 50 mm.
- Through the wall Ø 40 mm.
- Discharge nozzle Ø 10 mm.

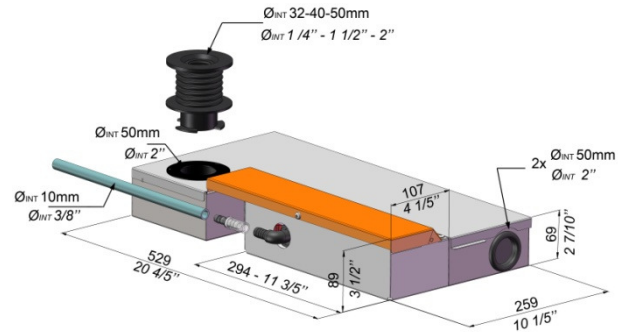
## APPLICATION

All supermarket fridges and freezers



## TECHNICAL SPECIFICATIONS

<b>Max. flow rate</b>	<b>360 l/h</b>
Max. discharge head	<b>20 m (65ft)</b> – flow = 100l/h (26gph)
Max pressure	30 m (100ft) - flow = 0l/h
<b>Sound level at 3.3ft (1m)</b> according to EN ISO 3744 (Measured at LNE lab, pump operating with water, out of application)	≤ 60 dBA
Mains supply	230 V ~ 50/60 Hz - 60 W – 0.30 A
Detection levels	ON: 46mm, OFF: 21mm, AL: 50mm
Safety switch	NO - 8 A resistive - 250 V
Thermal protection (overheating)	30%: 3s ON – 7s OFF
Protection	IP20
Safety standards	CE
RoHS directive	Conforme
DEEE directive	Conforme
Pump dimensions	L : 366 x W : 112 x H : 89 mm
Unit dimensions	L : 520 x W : 259 x H : 69 mm
Packaging	6,7 kg – L600 x l 400 x H 120 mm
Masterpack	1 piece



## ACTUAL FLOW RATES (l/h)

		Total tube length Ø <sub>int.</sub> 10mm (3/8") - (C)
	Discharge head (B)	
	0 ft	360
	6 ft	340
	13 ft	315
	20 ft	290
	26 ft	260

## RECOMMENDED ACCESSORIES



**ACC 00126,**  
Clear PVC hose, Ø<sub>int.</sub> 10mm (3/8") – L 25m



**ACC 00215**  
3 self-sealing fittings for hose  
Ø<sub>int.</sub> 3/8" (10 mm)